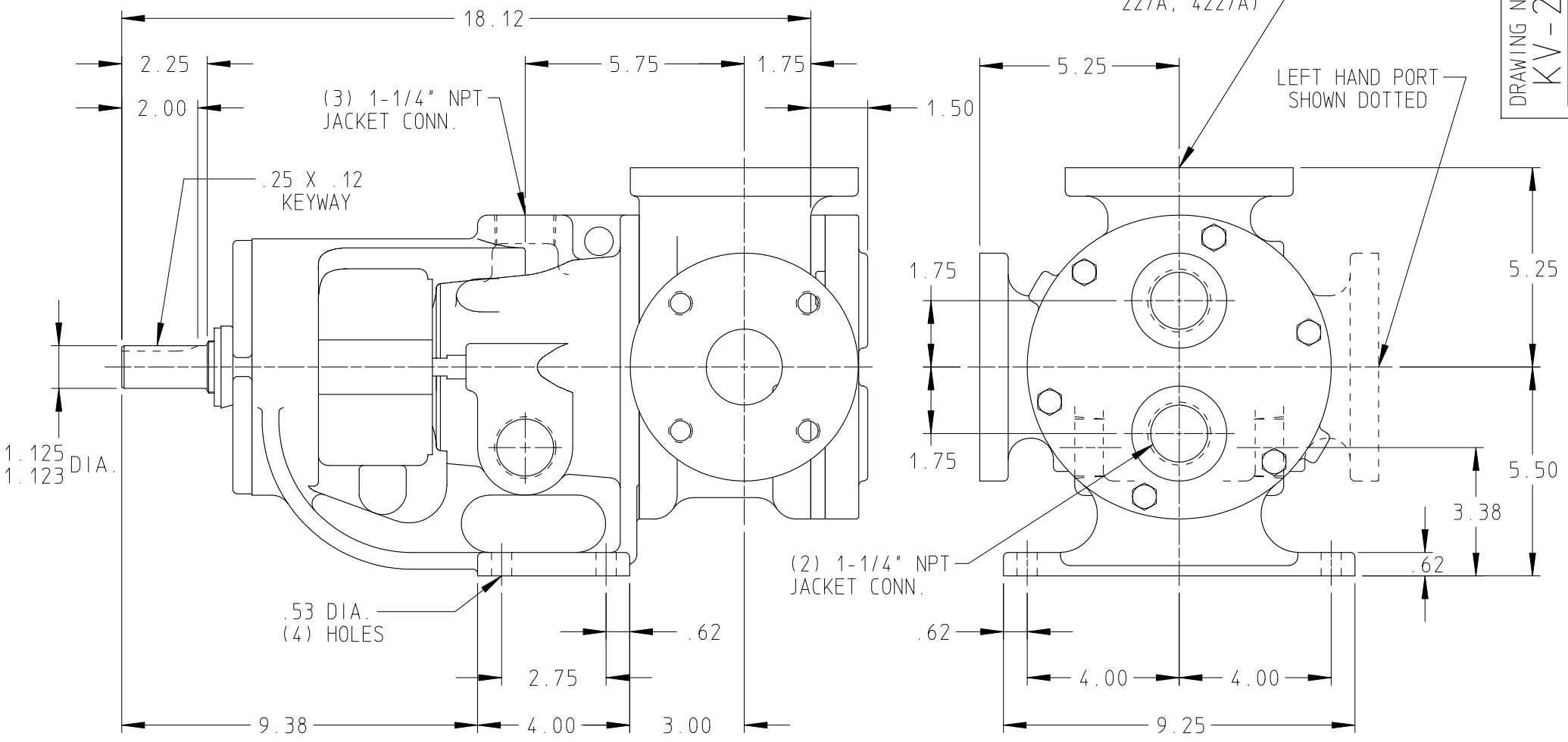


DRAWING NO.
KV-2018

PORTS: 2" FLANGES
SUITABLE FOR USE WITH
125# ANSI (224A, 4224A,
4224B)
150# ANSI (223A, 4223A,
226A, 4226A,
227A, 4227A)



STANDARD MODELS: K223A, K4223A, KK223A, KK4223A, K227A, K4227A, KK227A, KK4227A
 MODELS WITH OPTIONAL FLANGED PORTS: K224A, K4224A, K4224B, KK224A, KK4224A, KK4224B, K226A, K4226A, KK226A, KK4226A

DRAWN JASON DATE 12 DEC 1994
 CHECKED DC DATE 13 DEC 1994

THIS DRAWING IS THE PROPERTY OF VIKING PUMP INC. AND IS PROPRIETARY IN GENERAL AND DETAIL. IT SHALL NOT BE COPIED OR ITS CONTENTS REVEALED TO OUTSIDE PARTIES WITHOUT THE WRITTEN CONSENT OF VIKING PUMP INC.

VIKING PUMP
 VIKING PUMP, INC.
 A Unit of IDEX Corporation
 Cedar Falls, Iowa 50613
 U.S.A.

DRAWING NO.
KV-2018

REV. C
 26 SEP 2003